



WHICH FUTURE FOR HUMAN NEEDS AND HUMAN SERVICES IN CITIES?

March 12, 2018

Meet the geeks



MICHAEL SHAW
The Kresge Foundation



MOLLY COX
SA2020



CLEM BEZOLD
Institute for Alternative
Futures



**Why should we
predict the future for
human services?**



HUMAN SERVICES

We support the **advancement of human services** to **accelerate social and economic mobility** for people with low income in America's cities.



SA2020 drives progress toward a shared vision for a thriving San Antonio. We report on community indicators, inform and activate the public, and align efforts toward the community's goals.

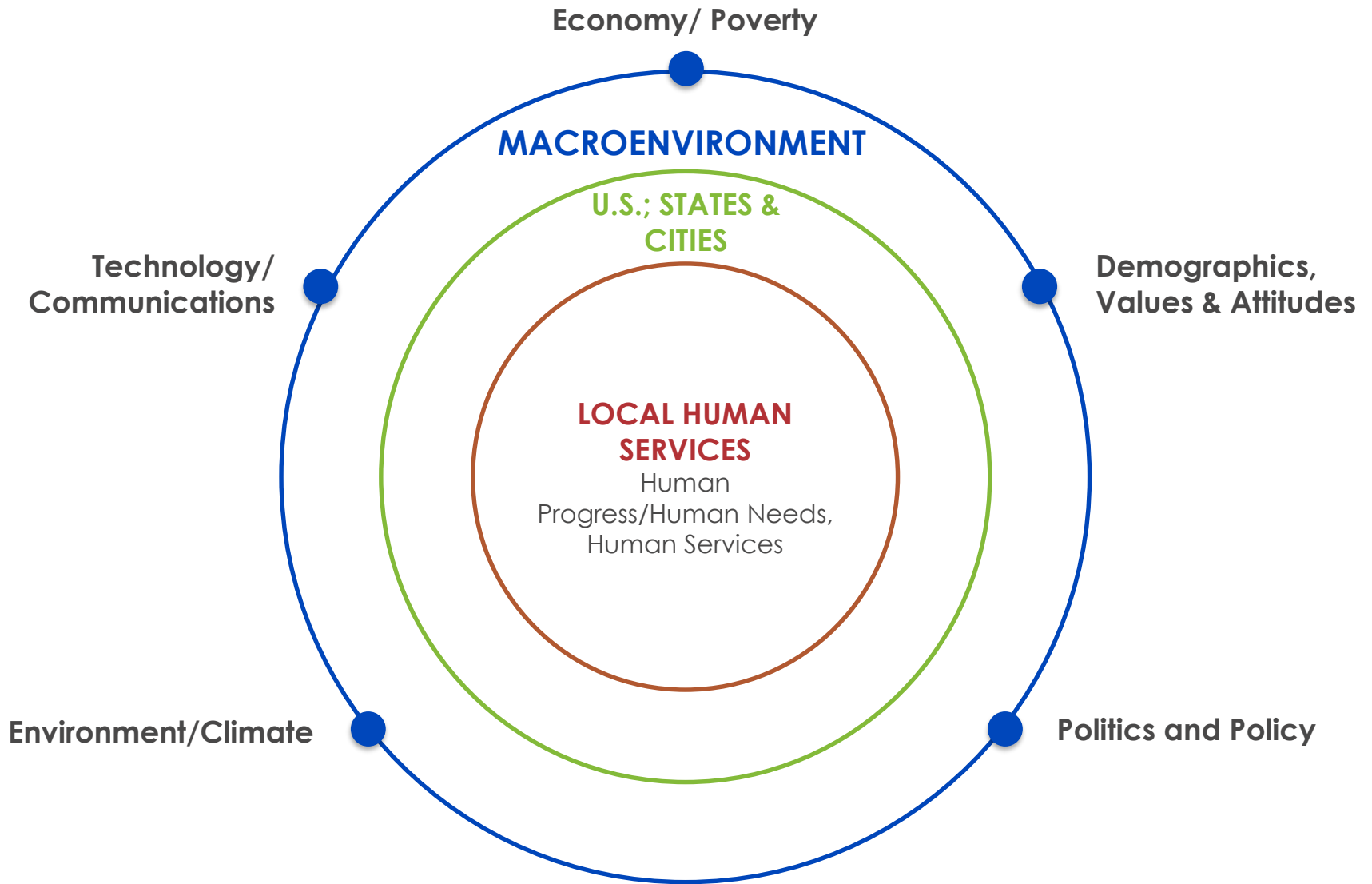
The Human Progress and Human Services 2035 Scenarios



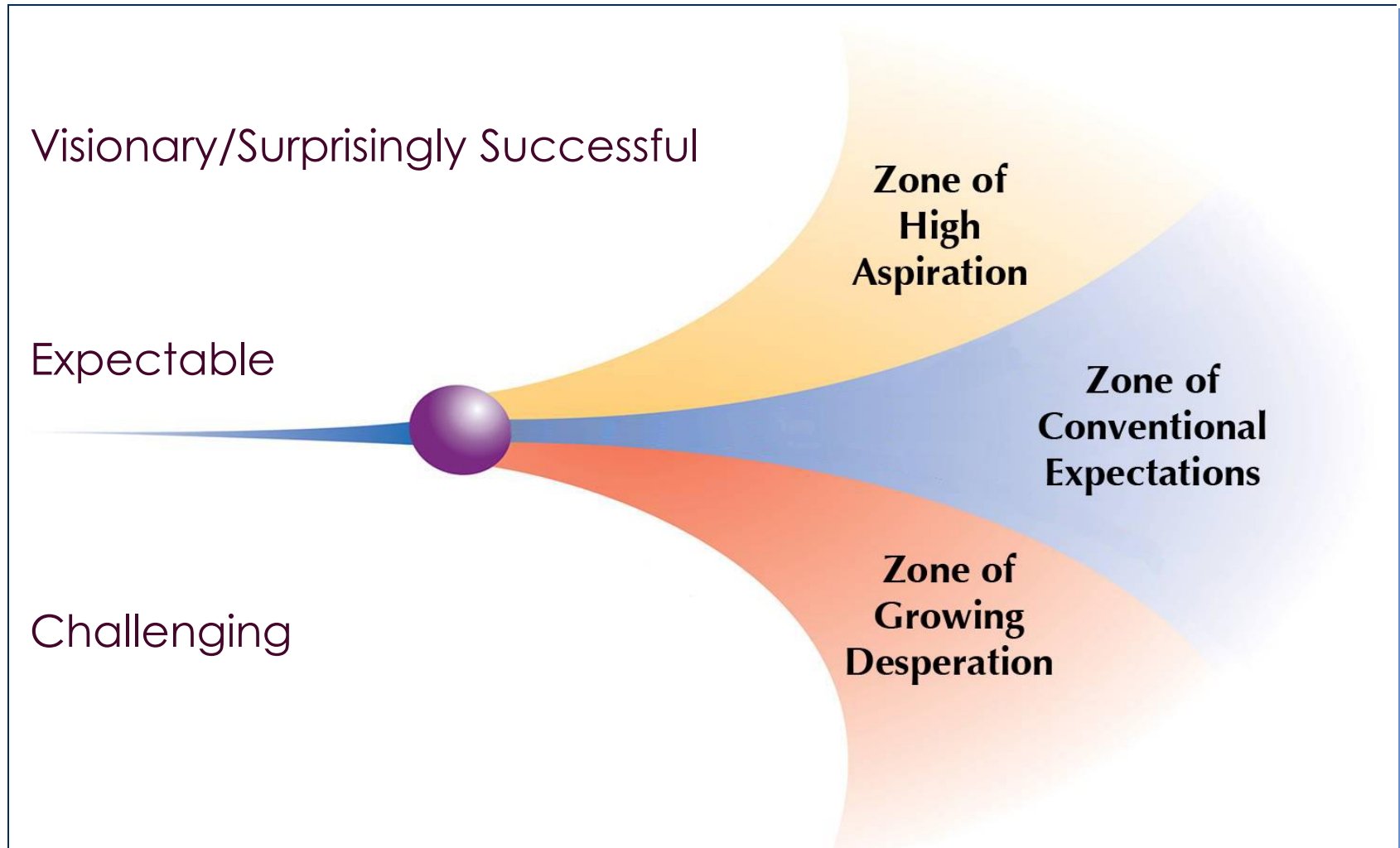
Scenarios are parallel stories about the future

Scenarios:

- Bound uncertainty
- Stimulate imagination
- Focus aspirations



Aspirational Futures: Scenario Zones



<p>Key Elements</p>	<p>Scenario 1: Expectable</p>	<p>2: Challenging</p>	<p>3: Visionary</p>	<p>4: Visionary</p>
<p>Macro Environment Economy, Climate, Technology, Demographics, Values</p> <p>Human Services Overview</p>				
<p>Specific Human Services Aging, Child Youth and Family, Behavioral Health, Disability, Housing, Income Supports</p>				

The Human Progress and Human Services 2035 Scenarios

1. Reductions and Rebounds (Expectable)
2. Navigating Unending Challenges (Challenging)
3. Building Human Potential (Visionary)
4. Thriving Communities (Visionary)

Scenarios developed in partnership with:

States

- Connecticut
- Mississippi

Counties

- Jefferson County (CO)
- San Diego County (CA)
- Montgomery County (MD)

Cities

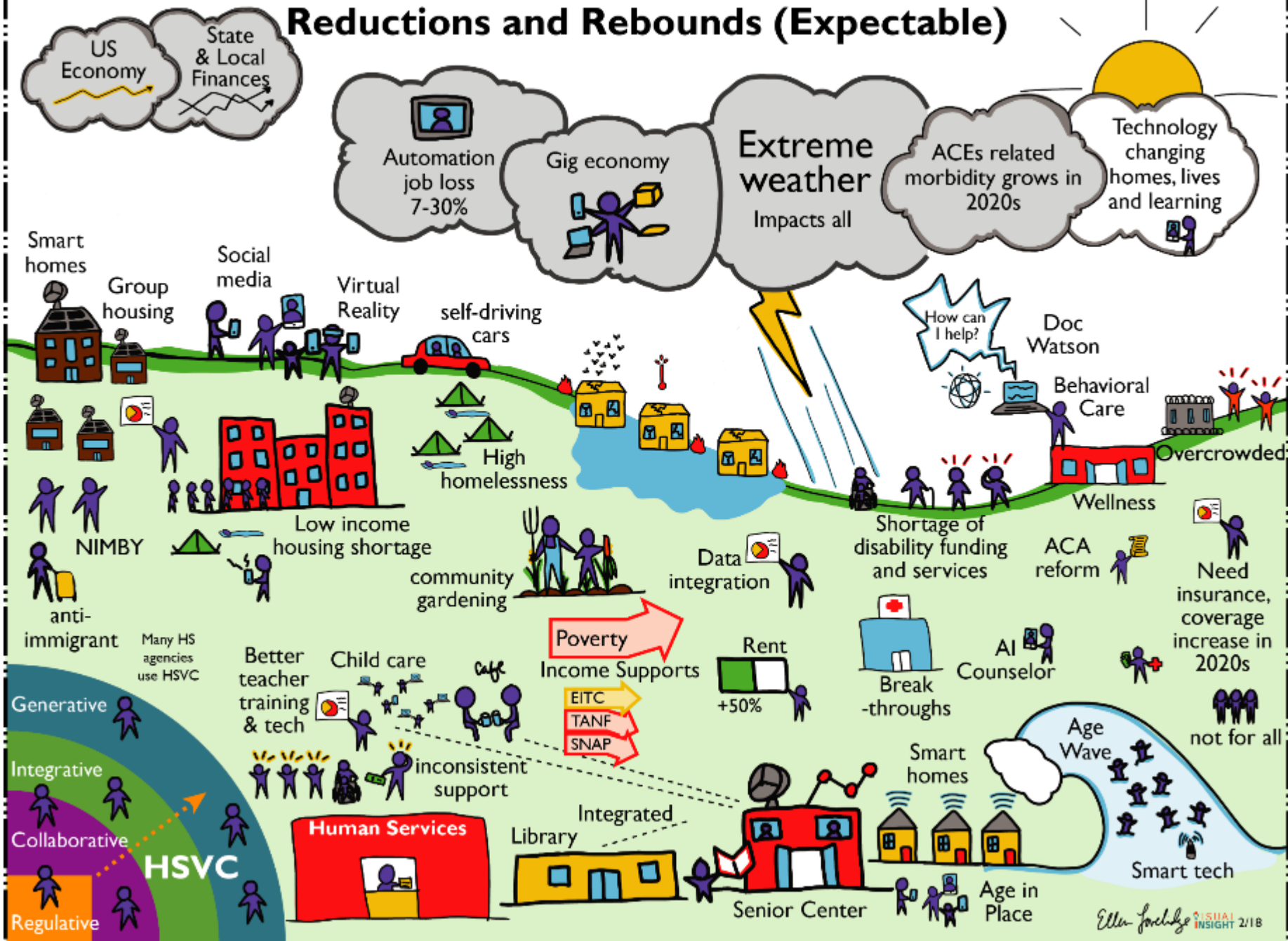
- San Antonio
- Memphis
- Richmond

Leaders from Human Services organizations:

- Community Solutions
- Alliance for Strong Families and Communities
- American Public Human Services Association
- Full Frame Initiative
- Third Sector Capital Partners

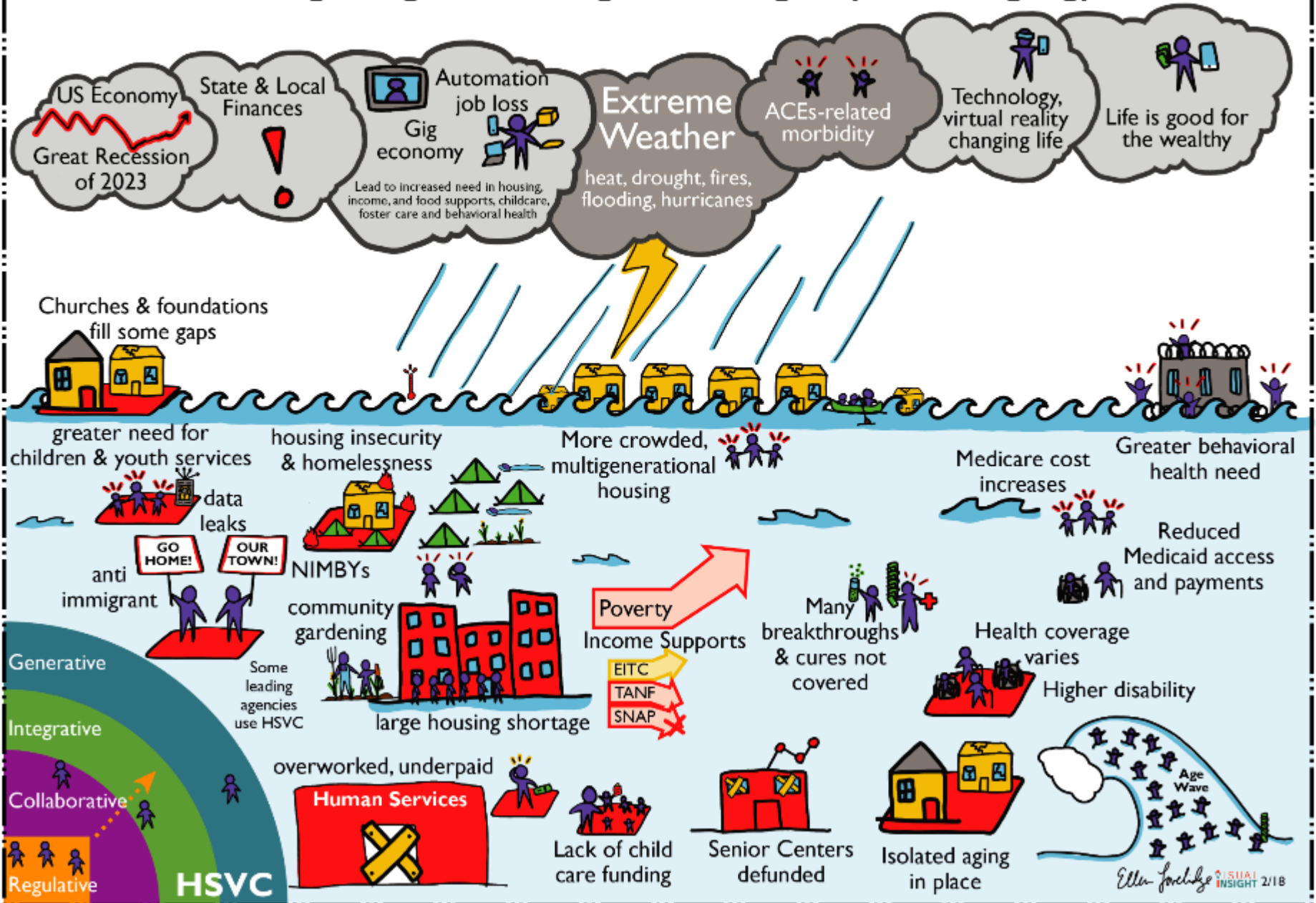
SCENARIO 1: REDUCTIONS AND REBOUNDS

Scenario I Reductions and Rebounds (Expectable)



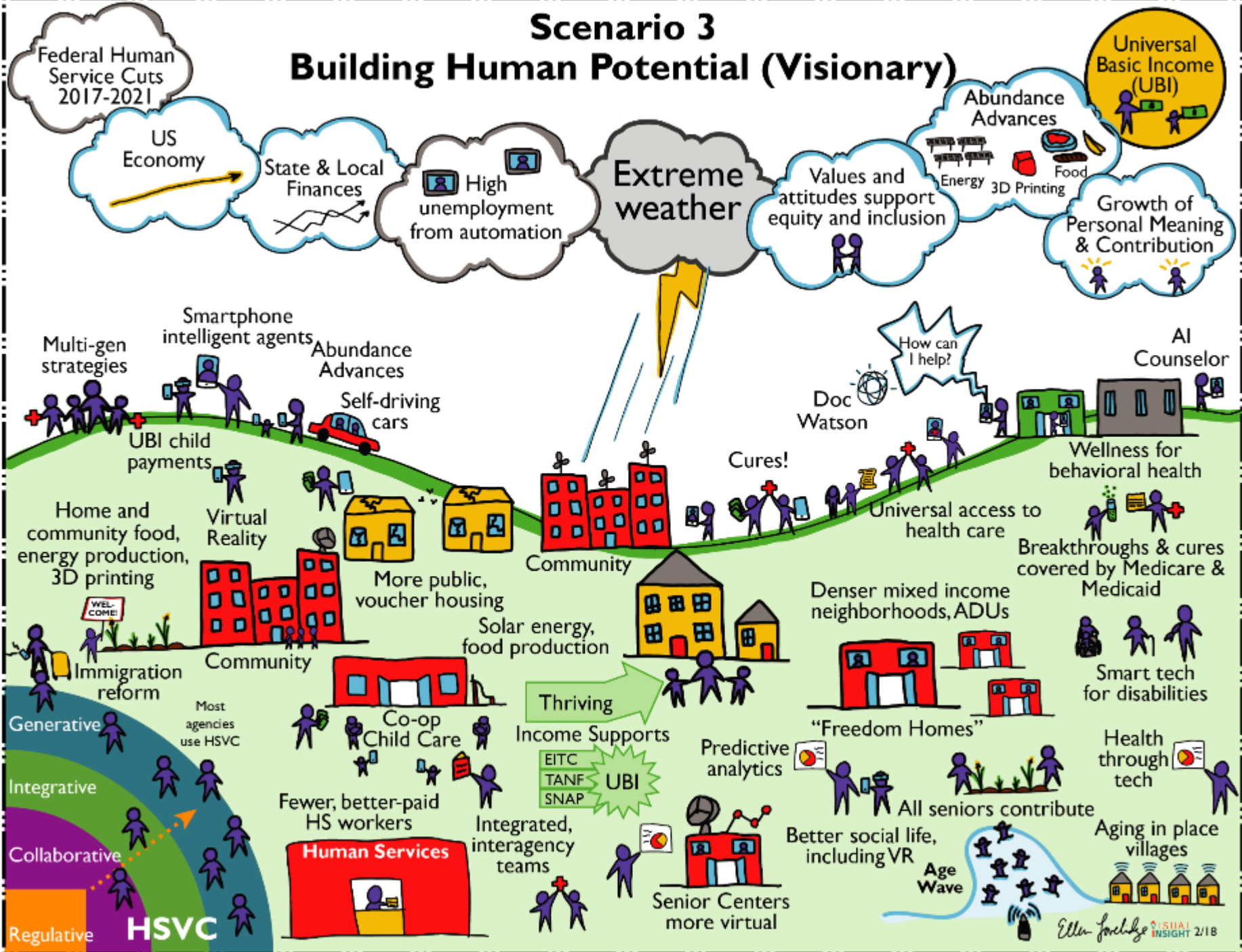
**SCENARIO 2:
NAVIGATING UNENDING
CHALLENGES**

Scenario 2 Navigating Unending Challenges (Challenging)



**SCENARIO 3:
BUILDING HUMAN POTENTIAL**

Scenario 3 Building Human Potential (Visionary)



SCENARIO 4: THRIVING COMMUNITIES

Scenario 4 Thriving Communities (Visionary)



SA2020 and Local Response to Scenarios



LET'S PREDICT THE FUTURE, TOGETHER.

THE RISE OF EQUITY AND INCLUSION ARE AN IMPORTANT FACTOR IN THE SUCCESSFUL SCENARIOS. WHAT ROLE CAN CITIES PLAY IN FOSTERING EQUITY AND INCLUSION? WHAT CONCRETE WAYS THAT CITIES CAN DO THIS?

PREDICTING THE FUTURE IN YOUR CITY

- Use the existing Human Services 2035 Scenario sets as an exercise with your community or organization
- Or you can develop your own local scenarios!

Scenarios coming soon to:

- altfutures.org/humanservices2035
- kresge.org/humanservices2035